



Two Gateway Center | Suite 348
603 Stanwix Street | Pittsburgh, PA 15222

Take a look inside to see how your support
is helping our work make the grade.



PROfiles:

Welcome to our second issue of *PROfiles*: an intimate look at the work and impact of the Extra Mile Education Foundation.



PROfiles:

ISSUE NO. 2
NOV. 2019

A personal look at what it takes to succeed in school and life.

It's the time of year when we reflect on the year past and share stories of success and offer words of thanks. We are also taking some time to share our thoughts about what lies ahead and making sure we can be successful for years to come.

We are grateful for your continued support of the schools and students of the Extra Mile Education Foundation. We have had a year of challenges and changes, and we anticipate more in the coming year – but we are optimistic. We are serving nearly 700 students, so we know that offering a choice in education to Pittsburgh's urban families is still necessary. It is our intent to continue to support the students in our operationally supported schools and our scholar schools for as long as possible. Your continued generosity will insure that this will happen.

A significant portion of our overall fundraising is our events program. We appreciate the sponsors and friends who are so important to the success of each event. You will see a brief recap of the events held throughout the year this year and we want to again express our thanks to the many people who made our events so successful.

Our best wishes to you in the coming season of thanks with our gratitude for all that you do on behalf of the Extra Mile.

Sincerely,

Suzanne M. Vertosick
Executive Director, Extra Mile Education Foundation



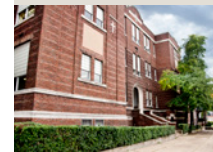
NEWS EMBRACING change

We have seen a number of changes in the past year, and there are more to come. We are embracing those changes and planning for a future that, while uncertain, is full of possibilities.

STRUCTURAL CHANGES



In July, the schools supported by Extra Mile – St. Benedict the Moor, Sr. Thea Bowman Catholic Academy, and Northside Catholic Assumption Academy – were unified under a regional governance structure similar to that of other schools in the Diocese of Pittsburgh. Unlike the Diocesan regionalization,



the Extra Mile schools were grouped by common purpose and need rather than geographic location. Little has changed in the day-to-day operations



of the schools, but this new consolidated administrative structure for the schools gives greater financial oversight of the schools and allows for greater collaboration in terms of curriculum, technology, and professional development.

In short, this process formalized for our schools what they have been doing on an informal basis for some time. The schools are still Diocesan schools, but this new governance structure puts more decision-making responsibility in the hands of the five-member board.

STAFF CHANGES

There has been a major change in staffing here as well. Our Director of Educational Programs and Partnerships, Michelle Peduto, accepted the position of Director of Catholic Education for the Diocese of Pittsburgh. While we were very sorry to lose her here, it is a position for which she is enormously qualified, and we know that she continues to advocate for the Extra Mile schools from her new office just down the street. We wish her all the best.



Continuous Improvement

It was noted that all schools provide a safe environment and students feel that teachers are supportive and encouraging.

For years the Extra Mile Education Foundation has conducted independent evaluations of our supported schools. The recommendations made by past teams of evaluators have guided school efforts to improve achievement, and have led to the development of new programs.

Last fall, St. Benedict the Moor, Sr. Thea Bowman Catholic Academy, and Northside Catholic Assumption Academy worked with a team from the Tri-State Area School Study Council of the University of Pittsburgh. The evaluation was led by Dr. Diane Kirk, Director of Tri-State, and her associates, Drs. Nick Bayat and Mary Ann Battaglia.

The evaluation focused on three areas: school climate, educational practices, and student performance. One member of the team worked specifically with one school, and did classroom visitations as well as interviews with faculty, staff, students and parents. Work was done in the schools during the months of December 2018 and January 2019, and the findings were reported to the Board of Directors of Extra Mile and to the schools in the spring.



It was noted that all schools provide a safe environment and students feel that teachers are supportive and encouraging. While expectations are high, everyone is trying to do their best. Teachers foster positive relationships with students and family members.

Recommendations focused on alignment of curriculum across the three schools and offering additional professional development for faculty. The team from Tri-State has already begun to work with the faculties of the three schools to implement the recommendations. A three-year plan of curriculum management has been initiated with math curriculum the first area of focus, followed by language arts, and then the remaining subject areas.

Planning for the Future

For Extra Mile, sustainability is the operative word for the foreseeable future – sustainability of mission and the funds to support that mission.

Extra Mile turns thirty next year. We have partnered with the Diocese of Pittsburgh throughout that time, supporting schools in under-resourced neighborhoods in Pittsburgh – first three, then four, then two, now three again. As the Diocese consolidates parishes and schools, the partnership system of support that has worked for those years may change – the Diocesan parishes will not have the same financial resources available, putting a larger burden on the Foundation. In addition, aging school buildings and the changing demographic landscape of Pittsburgh will also have an impact on Foundation support. Given these changes, the Foundation seeks to insure that it will be positioned to continue its mission effectively while managing its resources well.

We have begun a planning process that will guide us in how to best serve our students – where is the most significant need, which buildings have the least capital need, and where will we find the best partnerships to continue the work we do.

At present, Extra Mile continues to support three schools through direct operational subsidy. Total operational support has reached \$2.2 million, with St. Benedict and Sr. Thea Bowman receiving the bulk of support. Additionally, most capital projects in these schools are also covered by the Foundation and that has become a significant challenge. As Diocesan regionalization continues, parish support is likely to be reduced, putting increased financial responsibility on the Foundation.

For Extra Mile, sustainability is the operative word for the foreseeable future – sustainability of mission and the funds to support that mission.

To that end, we are launching a major strategic planning initiative which will be a primary focus for Extra Mile over the next five to six months. We will be in touch with many of our partners during this time as we gather the data necessary to plan effectively for the next five to ten years. We look forward to your input and your wisdom, and thank you for your continued support of Extra Mile.



An Eventful Year at Extra Mile

Events are a significant part of our total fundraising for the year. We are grateful to all who contributed to the success of this year's events: Field Trip in April; Summer Social in June, with special thanks to the Young Professional Advisory Committee (YPAC) for putting the entire event together.

Our last event of the year, but certainly not the least – Taste! –

our spectacular wine tasting event. Special thanks to Kevin McClatchy for his continued leadership for this event, now in year seven. Kevin and his good friend, Jonathan Newman, continue to raise the bar in fundraising for Extra Mile. Taste! has secured well over \$700,000 for us since its inception.

SEE YOU AT THESE GREAT EVENTS NEXT YEAR!



We Make it Count

We know that your donation to Extra Mile is only one of many choices you have when supporting charitable, community and education programs.

Our team is committed to tracking and sharing the impact that is made through your support. We could not do this work without you!

- 2,100 eighth-grade graduates
- 96% high-school graduation rate
- 88% go on to college, vocational training or the military
- 95% daily student attendance
- All parents pay at least a portion of the school's \$2,000 tuition, and all attend parent/teacher conferences



Help Support Future Successes

— by calling —

412.456.3103

— or visit —

extramilefdn.org